

NEW VISTA SOCIETY

Celebrating 60 Years of Caring · 1943 · 2003

In 1943, a Burnaby MLA by the name of Earnest E. Winch, founded the New Vista Society. The New Vista Society provided housing and care for convalescing women released from psychiatric care. When housing was not available, or when funding was scarce, Mr. Winch often supported women in his family's house. He provided them with safe shelter, food and support. Mr. Winch kept in touch with these women until he was certain that they were integrated into the community and could support themselves. We are proud of our founder's commitment, and we continue to uphold the ideals of supporting the people in our community who need our help.

The Early Era

The New Vista Society built 125 apartments in Burnaby between 1943 and 1957. There were 15 buildings in five separate apartment projects.

One of these apartment projects, the Lambert House, had eight bachelor and four one-bedroom suites. All the suites were designed for wheelchair access and had ground floor entry. Lambert House opened in 1956. The New Vista Society had established a strong base in providing responsible effective housing for seniors.

The Towers

In 1972 the Winch Tower was constructed. Two years later, a sister tower, the Vista Place Tower, was completed.

Each tower has 146 bachelor apartments and 28 one-bedroom apartments. The towers are home to 404 seniors in our community.

The Care Home was built in 1975 and is currently home to 236 residents. The Adult Day Program, Cranberry Cottage, opened shortly after, and 3 more housing developments, Douglas Manor, Grace McInnis Place and most recently, Margaret Bacchus Manor followed. J.S. Woodsworth

Court, a 40 unit social housing project, opened in the late 1990's on 11th Avenue in Burnaby.

Care Centered Society

From our proud beginnings in 1943 when the New Vista Society was incorporated, to our latest seniors housing development, the New Vista Society has maintained a vision of caring for those in the community who need our help.

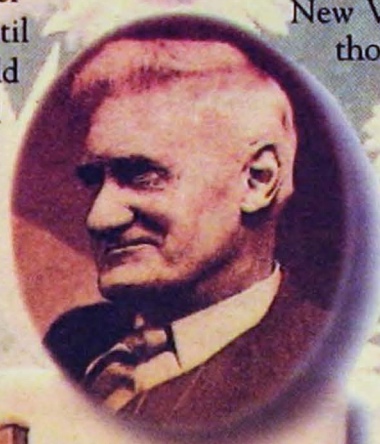
The New Vista Society represents a team of care and support professionals. We are committed to maintaining the vision "working together we create an accessible, integrated community where all are empowered to live meaningful, purposeful, interactive lives".

New Vista is proud to be the first facility in BC to formally adopt the "Eden Alternative". The Eden Alternative philosophy is organization-wide and eliminates the three plagues of long term care, loneliness, helplessness and boredom. Residents and staff work together to maintain the environment that is enlivened with plants, animals and children. Decision making is done as close to the elder as possible.

The New Vista Society hosts a variety of community events: annual craft and baking bazaars, Community Harvest Fair, weekly bingo and community education workshops and an annual Open House. The care home also has weekly social activity groups that include: tai chi, table bowling, horse shoes, walking, gardening, reading, singing, baking and ceramics. Through its funding efforts,

New Vista is offering fitness and strength training to residents, clients and tenants now.

Our tenants and residents fully participate in all aspects of life at New Vista. Residents from the care home are represented by the resident's council, while tenants' association represents over 660 tenants from the various apartment projects. 🦋



CONTENTS: • *Our Beginnings* • *Benefits of Special Programs at New Vista*
 • *More Than Just Buildings* • *The Vista Boutique and Cafe* • *Gala 2003*
 • *Future Plans and the New Vista Foundation* • *How You Can Help*

